



DECEMBER 2023

# THE SHELBY PRES (S)

Growing • Praising • Serving

Published monthly by Shelby Presbyterian Church

Sisters and Brothers in Christ,

In the lead up to Thanksgiving, my son saw a toy he wanted. I told him that if I bought the toy for him, he could not have it until Christmas. He agreed. But soon after, he said, "Papa, I wish tomorrow was Christmas."

**Patience may just be the most difficult virtue to cultivate in our lives.** Our movies, music, and television stream into our homes on demand. We shop on our phones. Even fast food is faster now – ordered in an app and picked up with no line.

So, in a world where everything is at our fingertips, **waiting seems cruel.**

**Yet, waiting can be good for us.** In a time when depression and anxiety are at dangerous levels, studies have shown that the most patient among us tend to be less depressed or anxious, even when life is hard or seems unfair. As the prophet Isaiah declared, "Those who wait on the Lord will renew their strength."

**Advent is about waiting for God and also remembering that God is with us.** It's about having the faith to trust in what we cannot see, while also having the courage to love mercy, act justly, and walk humbly with our God. After all, the same Spirit that raised Jesus from the dead lives in and among us – God is with us.

Now, I know that my withholding a toy is not going to instill a sense of God's presence in Harrison. What's more, my own patience is in jeopardy as I desperately want to give my sweet child his present. But for both of us, **cultivating patience even in small ways empowers us to rise above a culture of instant gratification.**

So, I encourage you to **find something this season to take you out of the hustle and bustle, that will help you to be patient** – Quiet your mind to wait for the Lord, while also accepting the presence of the Lord in your life. This may be a new book, prayer time, or a period of daily silence. It may be the daily Advent Video Reflections that will be on Facebook and YouTube every weekday at 12:15 pm.

Remember that the Christian life is not about earning God's love or achieving salvation. **The Christian life is about being empowered by God's love and God's gift of salvation to patiently walk with Christ in the ministry of reconciliation.** Through chaos, God is with us. Through suffering, God is with us. Through uncertainty, God is with us. Through whatever your family endures, God is with us.

– Drew

## Shelby Presbyterian Church

226 East Graham Street

P.O. Box 1444

Shelby, NC 28151-1444

Phone: 704.487.8503

[www.shelbypres.org](http://www.shelbypres.org)

[info@shelbypres.org](mailto:info@shelbypres.org)

Office Hours: 9:00–4:00 Mon–

Thurs; 9:00–12:00 Fri.

**Pastor:** Drew Mangione

[drew@shelbypres.org](mailto:drew@shelbypres.org)

**Minister of Christian Ed. &**

**Families:** Carol Ann Hoard

[carolann@shelbypres.org](mailto:carolann@shelbypres.org)

**Church Administrator:**

Miranda Wood

[miranda@shelbypres.org](mailto:miranda@shelbypres.org)

**Office Assistant:** Sherry Thomas

[sherry@shelbypres.org](mailto:sherry@shelbypres.org)

**Bookkeeper:** Erin Borders

[erin@shelbypres.org](mailto:erin@shelbypres.org)

**Sexton:** Marie Jackson

[marie@shelbypres.org](mailto:marie@shelbypres.org)

**Director of Music & Organist:**

Emily Monroe

[emily@shelbypres.org](mailto:emily@shelbypres.org)

**Choir Director:** Bruce Moser

[bruce@shelbypres.org](mailto:bruce@shelbypres.org)

**Nursery Director:** Lindsay Carter

**Nursery Assistants:** Lilly Hamilton

Holly Conner

**Rainbow Connection Director:**

Abby Goins

704-487-7075

[rainbow@shelbypres.org](mailto:rainbow@shelbypres.org)



## From the Desk of Carol Ann

There are moments in life when nothing seems to go your way, everything that could go wrong does go wrong, and your fondest hopes and wildest dreams lie in shattered pieces. Those are the moments when your heart aches with the bitterness of unfulfilled longings, broken promises, or grief so powerful it threatens to take you down.

During this Christmas season, many of us have experienced these moments. A very sick child or a very sick spouse or you hear the words "There will be a lay-off after the new year. Enjoy your jelly of the month club. Have a great Christmas!" This may be the first Christmas after a divorce or the passing of your loved one. It could be a very lonely Christmas. It is hard to rejoice even when we sing "Joy to the World." Joy does not mean living in denial of all the pain in the world. It is not even about how I feel.

When the angel said to the shepherds on the first Christmas Day, "Do not be afraid; I bring you good news of **great joy** which will be for all the people, for today in the city of David there has been born for you a Savior, who is Christ the Lord." (Luke 2:10-11).

To rejoice in the Lord does not mean you rejoice only in the happy moments or when everything is going great. We are called to rejoice even when life is messed up and mixed up.

The beauty of the joy God offers will always be available to you in Christ. **You have to Choose Joy.** Just like the angel told the shepherds, we no longer need to live in fear or worry, because God's joy will always be available to you.

- CA

## Catechism and Confirmation Class



Catechism - For 5th grade  
and Middle Schoolers

Confirmation -  
For High Schoolers



Will meet on December 3 at  
3:30-

Next meeting will be  
January 7th

## Youth Christmas Party

Sunday, December 10th  
From 5 PM Until 7 PM  
Youth Room

Join us to celebrate Christmas with a fun  
time together. Bring a dish to share and a \$5  
gift for exchange!



# Growing in Grace Choir

December 3

Children will sing during the  
10:00 worship service.



\*Children will practice at  
9:15 in the sanctuary.

## Youth Sunday Nights

# Supper



Like to cook? Like to order take-out?  
We need you!

Would you be willing to prepare a meal  
for our youth on a Sunday night?  
December 3 is open and all of January!  
Sign up with Carol Ann

# Youth Sunday Nights

DEC. 3-3:30 CONFIRMATION AND CATECHISM  
5:00-7:00 YOUTH  
DEC. 10- CHRISTMAS PARTY 5-7:00  
DEC. 17 - LIGHT BALL DASH

We will resume  
Sunday Nights on  
January 7th.  
Dinner Provided!

# SAVE THE DATE

SUMMER  
**2024**

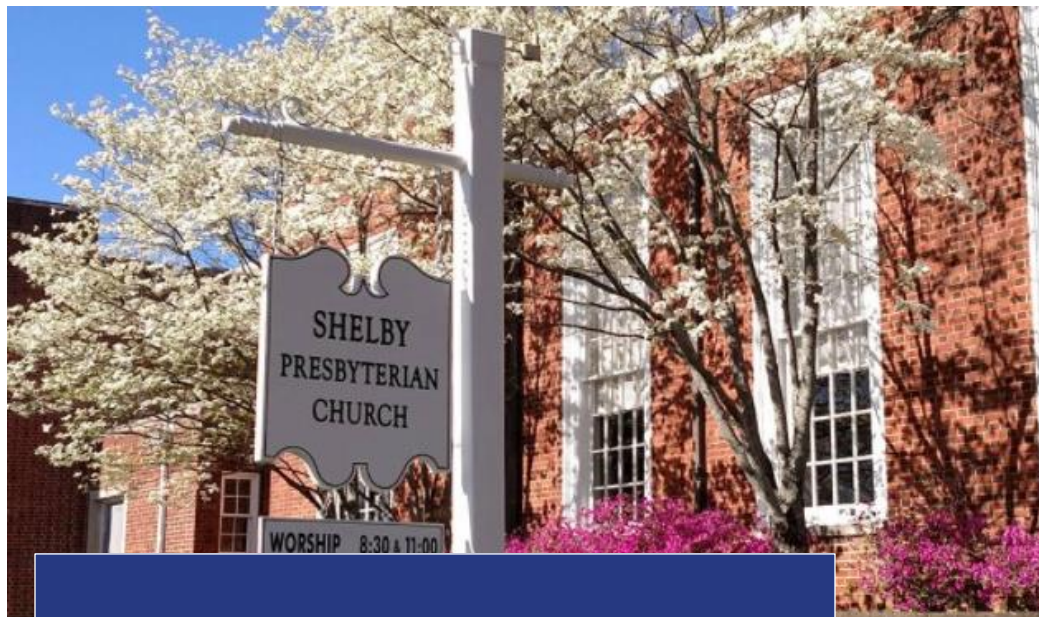
# PASSPORT

Friendsgiving  
2023



PRESBYTERIAN YOUTH  
**TRIENNium**  
July 28 - 31, 2025  
Louisville, Kentucky  
More information coming in 2024!  
[www.presbyterianyouthtriennium.org](http://www.presbyterianyouthtriennium.org)





## What's Going on at SPC?!

**WEDNESDAY NIGHT**

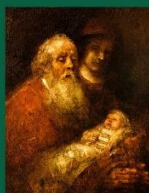
# SUPPER AND CAROLING

**DECEMBER 6 | 6 PM**

Join us for pizza, salad, and ice cream sandwiches.  
After dinner we will load up the trailers and go caroling.  
Donations will go to the SPC Emergency Assistance Fund.

## Advent Video Reflections

FROM SHELBY  
PRESBYTERIAN  
CHURCH



Posted Monday to Friday at 12:15 pm  
Dec. 4-22 on Facebook & YouTube

Each video reflection is about 10-15 minutes long  
and includes a poem, scripture, art and prayer, for you  
to encounter the season in a new way.



### DECEMBER EVENTS & IMPORTANT DATES

December 3<sup>rd</sup>: **Children will sing** during worship and 5 Cents a Meal.

December 6<sup>th</sup>: **Wednesday Night Supper and Caroling** at 6:00. Dinner will be pizza, salad, and ice cream sandwiches then caroling.

December 7<sup>th</sup>: **Men's Breakfast** at 7:00 am. The Men of SPC will meet for breakfast and sharing prayer concerns at Ken and Mary's Restaurant, 1628 S. DeKalb St. **THE FRIENDLY BEASTS** will perform for Rainbow Connection at 11:15.

December 9<sup>th</sup>: **Community of Love** @ Bobby Bell Pavilion.

December 10<sup>th</sup>: **Handbell Choir** will perform during worship, **"Let There Be Christmas, Shelby!"** @ 3:00 at CUMC. **Youth Christmas Party** @ 5:00. Don't forget to turn in your **TPA Angel**.

December 14<sup>th</sup>: **Rainbow Christmas Program** @ 11:00, 11:20, and 11:45.

December 17<sup>th</sup>: **Keyboards at Christmas** @ 3 and 6. **Light Ball Dash** @ 5:30.

December 18<sup>th</sup>: **Newsletter** articles are due to Miranda, [miranda@shelbypres.org](mailto:miranda@shelbypres.org).

December 20<sup>th</sup>: **Rainbow Early Dismissal** @ 12:00, Rainbow will return on 1/8. **Longest Night Service** @ 7:00.

December 24<sup>th</sup> **Christmas Eve Service** with the Friendly Beast @ 5:00.

December 25<sup>th</sup> - 26<sup>th</sup>: **Church Office is CLOSED.**

December 31<sup>st</sup>: **Carol Ann** is leading worship.



DR. DERWIN L. GRAY

BUILDING A  
MULTIETHNIC  
CHURCH

**Starting in  
January 2024**

A GOSPEL VISION of LOVE, GRACE,  
AND RECONCILIATION IN A DIVIDED WORLD

**BOOK Study**

You're invited to participate in a study and discussion of  
"Building a Multiethnic Church" by Rev. Dr. Derwin Gray,  
Pastor of Transformation Church in Charlotte.

Pastor Drew Mangione of Shelby Presbyterian Church  
will lead the study over eight (8) sessions spread out  
from Jan. 17 to April 24 in SPC's Ellis Fellowship Hall

Childcare will be available in the Growing in Grace program  
for Pre-K to 5th Grade and for younger children in the nursery.  
Books are available for SPC and Ryburn Memorial Church.  
Please call or email Miranda at SPC 704-487-8503 or  
miranda@shelbypres.org by JANUARY 10, 2024.

**WEDNESDAY STUDY DATES (6 pm to 7 pm)**  
January 17 & 31    March 13 & 20  
February 21 & 28    April 17 & 24

CHRISTMAS JOY  
SPECIAL OFFERINGS  
LEADERSHIP, PRAYER, PRESENCE, AND PROMISE

**What child is this?**  
THE PERFECT GIFT.

*Christmas Joy Offering*  
Sunday, December 17

ON SUNDAY, DECEMBER 17, OUR CHURCH WILL COLLECT THE 2023 CHRISTMAS JOY OFFERING. WITH GRATEFUL HEARTS AND GENEROUS GIFTS, PRESBYTERIANS REACH OUT THROUGH THE CHRISTMAS JOY OFFERING TO MEMBERS OF OUR CHRISTIAN FAMILY AS GOD REACHES OUT TO US. ONE-HALF OF OUR GIFTS SUPPORTS THE BOARD OF PENSIONS' ASSISTANCE PROGRAMS, WHILE THE OTHER HALF HELPS TO SUPPORT SEVEN PRESBYTERIAN RACIAL ETHNIC SCHOOLS AND COLLEGES. WE ENCOURAGE YOUR PARTICIPATION AS WE HELP THOSE WHO ARE DISCOVERING AND DEVELOPING THEIR GIFTS AS STUDENTS, AND THOSE WHO HAVE SERVED THE CHURCH FAITHFULLY WITH THEIR GIFTS, AND WHO NOW NEED FINANCIAL ASSISTANCE. BRING JOY TO THE LONGING HEARTS OF YOUNG AND OLD ALIKE BY PARTICIPATING IN THE 2022 CHRISTMAS JOY OFFERING.

LET THERE  
BE CHRISTMAS,  
**SHELBY!**

Sunday,  
December 10  
at 3PM

Central United Methodist Church, Sanctuary

**FEATURING CHOIRS FROM  
ALDERSGATE UMC, CENTRAL UMC,  
FBC-SHELBY, AND SHELBY PRESBYTERIAN**

*Longest Night Service*

**WEDNESDAY, DECEMBER 20 AT 7:00**

While the holidays are filled with much joy and delight, there is often an unacknowledged side of it that is difficult and sad for many. Some may be grieving or experiencing grief all over again as the holidays bring a reminder of loved ones no longer here. Some are overwhelmed by the stresses of life while being expected to have it all together. With much emphasis on family and being together, many find themselves alone and experiencing deep loneliness. Other kinds of losses leave one feeling frustrated and maybe desperate. The widespread expectation that all should be happy and joyful may leave some feeling left out and inadequate.

**The Longest Night Service, on Wednesday evening, December 20, 2023, at 7:00 pm** will be an opportunity to acknowledge these experiences and feelings with others who are going through similar emotions and circumstances. In prayer and reflection, with music and Scripture, participants will find a relaxed, friendly environment in Ellis Hall to pause and take a break; to ask God's help and presence in coping with these often unanticipated and unintended results of the holiday season.

Coffee and hot chocolate (and water) will be served at 6:45 p.m. The Service will start around 7:15 and should conclude around 8:00 p.m. All are invited to participate. Invite others you may know who might find this service helpful to them.

### WANNA SEE SPC MINISTRIES AT WORK?

Check out our new bulletin board outside of Carol Ann's office. Each month it will be filled with exciting things going on in the current month along with pictures from all the fun from the previous month. Come and see the things you can be a part of at SPC!





# THE RAINBOW CONNECTION PRESCHOOL



It's the most wonderful time of the year!

When we celebrate the birth of Jesus, spend time with family and friends, give and receive gifts, and so much more.

November was a busy month, we talked about all the things we are thankful for, and enjoyed our Thanksgiving Luncheon together.

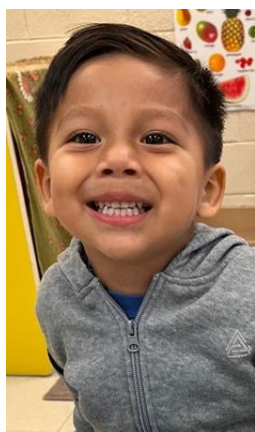
This month we will bake cookies, create Christmas crafts, and maybe even decorate some ornaments.

You can hear the children at Rainbow practicing songs for their Christmas programs, whispering about Santa Claus- and enjoying the magic of Christmas!



"She will give birth to a son, and you are to give him the name Jesus, because he will save his people from their sins."

(Matthew 1:21)



Abby Goins, Director







## COMMUNITY REFRIGERATOR

If you would be willing to wipe down and restock\* our Community Fridge in the weeks to come please sign up for a date:

<https://bit.ly/fridgesteward>

Contact Anna with questions:

[annaschweppe29@gmail.com](mailto:annaschweppe29@gmail.com)

(\*Suggested items: 1/2 gallon of milk, 1/2 dozen eggs, individual yogurts, tuna packets, apples, clementines, veggies, string cheese, bottles of water, bread, nuts, etc.)

**COMMUNITY OF LOVE**  
**FREE EVENT FOR OUR HOMELESS NEIGHBORS**  
 WARM MEAL, MUSIC, GAMES, AND MUCH MORE  
**Saturday Dec. 9th from 3 pm to 6 pm**  
**BOBBY BELL PAVILLON**

**DONATIONS COLLECTED AT SPC:**  
 NEW TOYS, NON-PERISHABLE FOOD, GIFT CARDS,  
 NEW CLOTHES/SHOES  
**VOLUNTEERS NEEDED TOO!**

SPC IS PARTICIPATING IN THIS EVENT  
 WITH RESTORED OF THE CAROLINAS  
 Contact: Phyllis Williams  
[RestoredOfTheCarolinas@gmail.com](mailto:RestoredOfTheCarolinas@gmail.com)  
 OR CALL (704) 981-1494



Barahona, Dominican Republic in January.

They will be serving on the Medical Mission team which averages seeing 125 patients a day and each person will receive bags of beans and rice.

Please be in prayer as they travel and serve along with the rest of the team.

Contributions are always appreciated for unexpected circumstances such as medicines, transportation and incidentals.

If you would like to contribute, send donations to Shelby Presbyterian- earmark DR Mission trip. Thank you.

**The Food Ministry** is looking ahead to Christmas. Every year, we give each guest a bag that contains useful everyday items. Any help collecting these items would be greatly appreciated. Please drop off contributions at the church office. We need at least 75 of all items listed. Tooth paste, toothbrushes, deodorant, shaving cream, razors, soap, floss, shampoo, toilet paper, body wash, combs, and miscellaneous items such as fingernail clippers, emery boards, etc. Thank you. The Food Ministry

**Blood Drive December 19<sup>th</sup>:** 37 out of 49 blood appointments are filled for the Dec. 19 American Red Cross blood drive! Are you scheduled to donate? If you would like to volunteer in a different capacity than a blood donation, sign up here:

<https://bit.ly/SPCblood22>

**SHELBY PRESBYTERIAN CHURCH** supports Feeding Kids Cleveland County and the

**Light 2023 ball Dash**



Join us 5:30 pm, Sun. Dec. 17 at Marion School on Forest Hills Dr. for a 1-mile Run/Walk to a celebration with live music and refreshments under the "Big Peach" on Peach St.



## UPDATES FROM OUR TURNING POINT PARTNERSHIP TEAM

This fall, our Turning Point Partnership has continued to strengthen as we are discovering new ways to provide support for the teachers, staff, students, and their families. We are thankful for the generosity of our church members, and the willingness of so many to come alongside this school and work together with them for the success of the students they serve.

- Backpack/Weekend Food Bag ministry - we are continuing to send 15 bags each week home with students who are dealing with food insecurity issues outside of school. Our youth group works together to pack these each week, and church members deliver them to the school. If you would like to be a part of this program, please reach out!

- Turning Point Angel Tree - located in the narthex, it still has a few different options for you to help provide some Christmas cheer for a Turning Point student. If you have already chosen a student's ornament from the tree, please remember all items are due back to the church office by **December 10<sup>th</sup>**.

- Christmas Cookie Day - On December 4th, we are having a Christmas Cookie Exchange day for teachers and staff. If you love to bake or cook, we'd love for you to share some of your favorite holiday treats! Call or text Molly Brownlee (704-477-8947) to sign up!

Coming up in January - we will once again have our Gift Card Offering on Epiphany Sunday, January 7th. These cards will be used for motivational events for the students, for good attendance, good behavior, and good work. Please bring \$10 gift cards to place in the offering plates. Some suggested location for gift card purchasing are Chic-fil-A, Cook Out, Dominos, WalMart, and Sonic.

Again, many thanks from our team to everyone who has embraced this partnership and helped us work in community with Turning Point. Our support and encouragement is making a difference in the school and in the lives of the teachers, staff, and students. If you would like to get more involved, please contact Molly Brownlee at [brownleemolly@gmail.com](mailto:brownleemolly@gmail.com) or 704-477-8947.



## MISSION & MINISTRY OCTOBER REPORT

\$1,256

### YOUR GIFTS TO EMERGENCY ASSISTANCE

FROM 5 CENTS A MEAL,  
MEMORIAL GIFTS, &  
DIRECT DONATIONS

\$2,471

### ASSISTANCE GIVEN IN OCTOBER TO HELP INDIVIDUALS AND FAMILIES AVOID CRISIS

10

### HOUSEHOLDS AIDED WITH FINANCIAL ASSISTANCE



### PERCENT OF ANNUAL TOTALS (THRU OCTOBER)

6.4 %



OF \$19,705 DONATED

13 %



OF \$18,677 GIVEN IN AID

15.4 %



OF 65 HOUSEHOLDS\*

FAMILIES RECEIVED HELP WITH BACK RENT,  
UTILITY BILLS, AND SURPRISE NEEDS NOT  
COVERED BY ANY OTHER LOCAL PROGRAM.



### FOOD MINISTRY & BACKPACKS



APPROXIMATELY 35 HOT LUNCHES  
SERVED EVERY MONDAY AT SPC



MORE THAN 30 FAMILIES GIVEN  
GROCERIES FOR HOME EACH WEEK



15 WEEKEND FOOD BAGS GIVEN TO  
TURNING POINT STUDENTS

\*September Report should have said 55 Households





## Member Care

The goal of the Member Life Ministry Committee is to extend love and care to all of our Shelby Presbyterian Church Family. If you find anyone in need of attention in our church family, in your neighborhood, or beyond, please contact Lori WehmueLLer, Member Life Ministry Chairperson, 704.472.5253 or [loriwehmueLLer@gmail.com](mailto:loriwehmueLLer@gmail.com) or the church office 704.487.8503.

Please include the following in your prayers:

John Auten	Debbie Ferrell
JoAnn & George Beattie	Susan Grose
Pam Birmingham	Ina Harrington
Debra Blanton	August Hohne
Dick Bowling	Joan Hunt
J.W. & Pat Brotherton	David Kelley
Donna Buies	David LeGrand
Pat & Len Byers and family	Cheryl Lutz
Karen Carpenter	Faye McCants
Myra Carpenter	Brooke McCurry
Robin Collins	Marie Patterson
Bert & Joy Cushman	Pauline Persing
Chris Denning	Finley Price Family

Ann Pharr
Ellen Poston
Clay Pruett
Mary Richards
Larry Stern
Tollie Stowe & Family
Beverly Styers
Doreen Wacaster
Linda Ware
Jackie Weathers
Stephanie Williams
Diane Windham
Teresa Wingo

- Children and Staff of Turning Point Academy
- Covid-19 research, caregivers, and patients
- Racial injustices
- U. S. Economy
- All those serving in the military
- Our brothers & sisters of Monte los Olivos
- John McCall in Taiwan
- Food Ministry
- Rainbow Connection
- Christians who are persecuted for their faith
- All disaster victims (volcanoes, floods, fires, etc.)
- All victims of violence
- All refugees

Thank you for expanding your prayer list to include specific children and youth each month. During December, pray for our **College Sophomores:** Emma Goforth, Tucker McIntyre, Mark Petrilli, Daniel Schweppe, Margaret Schweppe, and our **College Juniors:** Miles Beam, Charlie Brownlee, Janie Brownlee, Kyle Persing, Liza Smith, Sarah WehmueLLer.

### Prayers and Sympathy

Our prayers and sympathies go out to the family of Lucy Bolick, she passed away Sunday, October 29, 2023. Lucy had been a member of SPC for 35 years.

Our prayers and sympathies go out to Marie Jackson and family in the passing of her grandmother Thelma Hughes, November 9, 2023.

Our prayers and sympathies go out to Rich Kelly and family in the passing of his mother, Annelle Kelly on November 21, 2023. Annelle had be a member of SPC for 52 years.

Our prayers and sympathies go out to Jane Szymborski and family in the passing of her husband Paul, November 28, 2023.

## Happy Birthday!

December 1.....	Terri Byers
December 1.....	Phil Haydon
December 1.....	Vic McCord
December 1.....	Tim Zehnder
December 2.....	Zion Roberts
December 3.....	Scott Thomas
December 6.....	Ollie Haig
December 7.....	Nell Canipe
December 7.....	Mary Hamrick
December 7.....	David Webb
December 8.....	Mark Petrilli
December 8.....	Dylan Steeves
December 10.....	Mike WehmueLLer
December 11.....	Richard Dedmon
December 11.....	Silas Hamilton
December 11.....	Madison McIntyre
December 12.....	Eric WehmueLLer
December 13.....	Lance Ware
December 14.....	Shawn McNeary
December 15.....	Jennifer Niblack
December 17.....	Bert Cushman
December 17.....	Oliver Stern
December 18.....	Shannon Blackley
December 18.....	Turner Smith
December 18.....	Tara Warrick
December 19.....	Whit Beam
December 19.....	Dot Roark
December 20.....	Taylor Cerwin
December 20.....	Lou Gebel
December 20.....	Kate McIntyre
December 22.....	Becca Schweppe
December 22.....	Charlie Schweppe
December 22.....	Malachi Zehnder
December 28.....	Nico Blount
December 28.....	Jennipher Harrill
December 28.....	Larry Pearson
December 29.....	Ray Gravett
December 30.....	Dennis Beam
December 31.....	D Goforth



Thank you!

"I would like to thank everyone for the care I received after the death of my son. The food, donations, cards and visits were all appreciated. It helped to feel the warm embrace of my church family during this difficult time."

Thank you,  
Pat Byers and Family



Elliott McCray Goodson  
November 9, 2023

Elliott is the son of Molly and Adam Goodson and joins big brother Thomas. Overjoyed grandparents are Richard and Jan Dedmon.

Thanks, and praise to God for this new life!



James Patrick Yerger  
November 9, 2023

James is the first child for Anna and Jeff Yerger.

Overjoyed grandparents are  
Charles and Anne Langley.

Thanks, and praise to God for this new life!

## ARE YOU ON DUTY IN DECEMBER?

### Sunday Chimers

Dec. 3 Annie Moser  
10 Avery Moser  
17 available  
24 10 and 5 available  
31 available

### Elders Serving Communion

Dec. 24 Fred Blackley  
**5:00** Susan Bell  
Scoot Dixon  
Roger Holland  
Bill Jobe  
Laura Lampley  
Tom Martin  
John Schweppe Jr.  
Steve Sisk  
Larry Wilson

### Wednesday Night Supper Elders & Deacons

Dec. Susan Bell  
Richard Dedmon  
Michelle Moser  
Lori Wehmuller

### Deacons Taking Up Offering & Ushers

Dec. Thomas Monroe, captain  
Kyle Aldinger  
Holly Petrilli  
Mary Ann LaSelva

### Worship Liturgist

Dec. 3 Tara Warrick  
10 Mystie Brotherton  
17 Bly Borders  
24 **10:00** Michelle Moser **5:00** June Hobbs  
31 Steve Sisk

### Sound & Video Teams

Dec. 3 John Brotherton  
Joe Petrilli  
10 John Brotherton  
Patrick Glenn  
17 David Grose  
Mike Jackson  
24 **10:00** Chip Blackley **5:00** Chip Blackley  
Joe Petrilli Mike Jackson  
31 Patrick Glenn  
David Grose

### Sanctuary Worship Guild

Dec. 3 Barbara Hannah  
Barbara Blackburn  
10 Lyn Huston  
Lori Wehmuller  
17 Paul & Joyce Couey  
24 Harriette Beam  
Laura Beam  
31 Judy Greer  
Rachel White



# SPC Reports & Minutes

## SESSION MINUTES OCTOBER 17, 2023

### Communications

**Clerk's Report** – John reminded the session that when anyone is unable to serve Communion as scheduled, to be sure to secure a replacement in advance to permit the replacement to have an opportunity to review their assigned position.

**Deacon's Report** – Elizabeth Schweppe reported: The Blood Drive held October 17<sup>th</sup> succeeded the goal, collecting 45 units. The next drive is December 19<sup>th</sup>. The community refrigerator is up and running and to email or contact Anna Schweppe (704)466-0026 or annaschweppe29@gmail.com. Incoming Deacons were trained to usher and collect offering with Drew and Elizabeth explaining that Deacons are assigned to Neighborhood Groups. Deacons assigned to Neighborhood Groups are to be the leaders of care and compassion, the Elders are there to support.

**Pastor's Report** – Drew reported: Be sure to follow the personnel handbook; any complaints about staff members should be directed to Drew and complaints regarding Drew should be directed to the personnel committee chair. Drew reported that he was asked to do a post-COVID survey for a research organization and in doing so, crunched some numbers regarding the congregation. He said the church currently has about 260 active and affiliate members, defined as those who regularly attend worship in person or online, give, and/or attend special church functions. Of those, more than 23 percent of adults (30 percent, if including children) are new to the congregation since 2020, not counting some of the latest regular visitors. What's more, we have about 40 regular children under 12, many of whose parents are part of a robust group of 65 middle adults (35-64) who are among the most regular participants. This means we are still low with just 20 or so regularly involved young adults (18-34). Senior adults remain our majority with around 115.

**Online Votes & Minutes:** Minutes for the September 19<sup>th</sup> Session Meeting were approved unanimously following motion by Roger Holland, seconded by Bill Jobe.

### Committee Reports:

**Personnel Committee** – Laura Lampley reported: There will be a Book Study in preparation of anti-racism statement required by Presbytery. It will consist of 8 sessions, beginning January through April 2024 with Ryburn and other churches invited to participate. Books will be provided to members of our church and Ryburn but will be an expense for others desiring to attend.

**Discipleship Committee** – Steve Sisk reported: Sunday School will not be held on Christmas and New Year's Sunday for 2024.

**Finance Committee** – Scoot Dixon reported: Revenue is under budget \$11,012.00 for September and \$42,907.00 for the year-to-date; however, \$34,687.00 in carryover has not been applied. Expenses are under budget \$66.60 for September and \$19,617.00 for year-to-date. Actual expenses exceed revenue by \$24,002.00 for the year, again with no carryover applied. Our cash flow position remains strong. 2024 budget preparation is underway.

**Mission and Ministry Committee** – Larry Wilson reported: We are tightening the assistance process to permit \$250.00 per person, per year in a twelve-month period. Larry noted that our church and the Salvation Army are the only non-profits helping with rental expenses. We have received \$19,000.00 in donations for Emergency Assistance. Larry remarked on how great the need is for assistance in our community.

**Property Committee** – Fred Blackley reported: A new contract has been executed with our existing cleaning service. Staff now has an opportunity to make written comments for suggested cleaning needs in a journal provided by the cleaning service. 2024 Budget is being considered to include new HVAC for the rear Parlor and upstairs Youth rooms and for painting the sanctuary. A determination will be made later about whether these expenses be capital improvements versus annual maintenance. Greg Melton is continuing to work on the plans for kitchen renovation. Discussion was offered to consider replacement of the Sanctuary Microphones.

**Worship and Music** – Richard Dedmon reported: Heritage Sunday will be September 29, 2024. December 3<sup>rd</sup> begins Advent. The Christmas Cantata will be at Shelby Presbyterian on December 10<sup>th</sup> at 3:00

**Fellowship Committee** – Kimberly Dixon reported by email: November 1<sup>st</sup> is the next Wednesday night supper which will be provided by Debbie Hart, with Drew and Michelle Moser leading the program about spiritual gifts. The Community Table Thanksgiving Meal is scheduled for Wednesday, November 22<sup>nd</sup> from 4:00 P.M. to Sunset at Jefferson Park and we are partnering with Harvest Church to provide this service.

**Old Business:** None

**New Business:** None

**Action items from tonight's meeting:** Referral to Worship and Music Committee for consideration of a time change for Sunday Worship.



### **NOVEMBER 2023 STEWARDSHIP REPORT**

2023 Operating Budget.....\$645,006.00  
Needed Weekly.....\$12,403.96

<b>NOV. 5:</b>	Received.....\$12,574.61	Worship.....137	Livestream View....118	5¢-A-Meal....\$247.40
<b>NOV. 12:</b>	Received.....\$25,010.80	Worship.....139	Livestream Views.....103	
<b>NOV. 19:</b>	Received.....\$10,923.16	Worship.....141	Livestream Views.....107	
<b>NOV. 26:</b>	Received.....\$7,924.80	Worship.....142	Livestream Views.....107	

### **NOTES FROM THE BOOKKEEPER**

#### **Happy Holidays to Everyone!**

- For year-end charitable giving, checks must be dated and the mail postmarked by 12/31/23 to be considered for this year's pledge. You can also designate "2023" in the memo line of the check for clarity.
- If you'd like to contribute via your online banking BillPay feature, use Shelby Presbyterian Church as the 'pay to' account, with our PO Box 1444 Shelby NC 28151-1444 as the address. We will receive your donation via paper check from the USPS.
- Online giving for recurring gifts or a one-time gift is now available! From the Shelbypres.org website, click on "Give" at the top, then scroll down to "Give Online". You will need to create an account to set up recurring gifts.
- Our traditional giving by numbered envelope remains an option as well.

**PLEDGE UPDATE:** Your pledge to pray for, serve in, and give to your church will help us live into God's will in this exciting time. As of Tuesday, November 28<sup>th</sup>, 96 families have pledged \$492,750.00. Thank you. If you have not submitted your pledge, please place it in the offering plate or turn it in to Miranda who holds them in confidence and provides aggregate totals to help prepare next year's budget. Last year 112 families pledged \$527,016.00. Thank you. – Stewardship Task Force


**2024 OFFERING ENVELOPES** will be available for you to pick up at the church beginning Sunday, December 10<sup>th</sup>, in the hallway behind the sanctuary (across from the conference room). Be sure to get your box – they will be arranged in alphabetical order. If you use offering envelopes and cannot find your box, please let the church office know.

**A FLOWER CALENDAR** for 2024 will be posted Thursday, December 14<sup>th</sup>, on the bulletin board as you come in the west entrance (across from playground). If there is a Sunday in 2024 that you would like to reserve, please call the church office and we'll sign you up.

**HOLIDAY HOURS:** The Church Office will be closed Monday, December 25<sup>th</sup> and Tuesday, December 26<sup>th</sup>. Please check the bulletin and weekly email for hours on Wednesday, December 27<sup>th</sup>, Thursday, December 28<sup>th</sup>, and Friday December 29<sup>th</sup>. The Church Office will be closed Monday, January 1<sup>st</sup>.



# SHELBY PRESBYTERIAN CHURCH – DECEMBER 2023

SUNDAY	MONDAY	TUESDAY	WEDNESDAY	THURSDAY	FRIDAY	SATURDAY
					1	2
<b>1<sup>st</sup> Sunday of Advent HOPE 3</b> <b>5 Cents a Meal</b> <b>Children sing during worship.</b> <ul style="list-style-type: none"> <li>• 9:00 Sunday School</li> <li>• 10:00 Worship in Sanctuary &amp; livestreaming on YouTube &amp; Facebook.</li> <li>• 11:00 Handbell Rehearsal</li> <li>• 3:30 Catechism and Confirmation</li> <li>• 5:00 Youth Night</li> </ul>	<b>Turning Point Cookie Exchange 4</b> <ul style="list-style-type: none"> <li>• 9:30 Hot Lunch Ministry</li> <li>• 6:00 Discipleship Ministry</li> <li>• 7:00 Boy Scouts</li> <li>• 8:00 AA</li> </ul>	<b>5</b> <ul style="list-style-type: none"> <li>• 10:30 Staff Meeting</li> <li>• 2:00 Clerk's Council</li> <li>• 7:00 Worship &amp; Music</li> </ul>	<b>6</b> <ul style="list-style-type: none"> <li>• 11:00 Member Life</li> <li>• 5:00 Property Cmte.</li> <li>• 5:15 Handbells</li> <li>• 6:00 Wednesday Night Supper</li> <li>• 7:00 Choir</li> </ul>	<b>7</b> <ul style="list-style-type: none"> <li>• 7:00 Men's Breakfast at Ken &amp; Mary's</li> <li>• 11:15 Friendly Beasts at Rainbow</li> <li>• 12:00 Finance</li> <li>• 8:00 AA &amp; Al-Anon</li> </ul>	<b>8</b> 	<b>9</b> <ul style="list-style-type: none"> <li>• 3:00 Community of Love</li> </ul>
<b>2<sup>nd</sup> Sunday of Advent PEACE 10</b> <b>Handbells perform during worship.</b> <u>TPA Angel Tree Due</u> <ul style="list-style-type: none"> <li>• 9:00 Sunday School</li> <li>• 10:00 Worship in Sanctuary &amp; livestreaming on YouTube &amp; Facebook.</li> <li>• 3:00 Let There Be Christmas, Shelby!</li> <li>• 5:00 Youth Christmas Party</li> </ul>	<b>11</b> <ul style="list-style-type: none"> <li>• 9:30 Hot Lunch Ministry</li> <li>• 7:00 Boy Scouts</li> <li>• 8:00 AA</li> </ul>	<b>12</b> <ul style="list-style-type: none"> <li>• 10:30 Staff Meeting</li> <li>• 5:30 Personnel</li> <li>• 6:00 Fellowship Cmte.</li> <li>• 6:30 Joint Session &amp; Diaconate</li> </ul>	<b>13</b> <ul style="list-style-type: none"> <li>• 11:00 Rainbow Cmte.</li> <li>• 7:00 Choir</li> </ul>	<b>14</b> <ul style="list-style-type: none"> <li>• 11:00 Rainbow Christmas Program</li> <li>• 12:00 Finance Cmte.</li> <li>• 8:00 AA &amp; Al-Anon</li> </ul>	<b>15</b> <ul style="list-style-type: none"> <li>• 5:30 Girl Scouts</li> </ul>	<b>16</b> 
<b>3<sup>rd</sup> Sunday of Advent JOY 17</b> <b>Joy Offering</b> <ul style="list-style-type: none"> <li>• 9:00 Sunday School</li> <li>• 10:00 Worship in Sanctuary &amp; livestreaming on YouTube &amp; Facebook.</li> <li>• 3 &amp; 6 Keyboards at Christmas</li> <li>• 5:30 Light Ball Dash</li> </ul>	<b>Newsletters Due 18</b> <ul style="list-style-type: none"> <li>• 9:30 Hot Lunch Ministry</li> <li>• 7:00 Boy Scouts</li> <li>• 8:00 AA</li> </ul>	<b>19</b> <ul style="list-style-type: none"> <li>• 10:30 Staff Meeting</li> <li>• 1:00 Blood Drive</li> </ul>	<b>20</b> <ul style="list-style-type: none"> <li>• 12:00 Rainbow Early Dismissal</li> <li>• 7:00 Longest Night Service</li> </ul>	<b>21</b> <ul style="list-style-type: none"> <li>• 6:00 Mission &amp; Ministry</li> <li>• 8:00 AA &amp; Al-Anon</li> </ul> Rainbow out until 1/8	<b>22</b> 	<b>23</b> 
<b>4<sup>th</sup> Sunday of Advent LOVE 24</b> <b>Communion</b> <ul style="list-style-type: none"> <li>• 10:00 Worship in Sanctuary &amp; livestreaming on YouTube &amp; Facebook.</li> <li>• 5:00 CHRISTMAS EVE SERVICE w/ THE FRIENDLY BEASTS</li> </ul>	<b>25</b> <b>Christmas Day</b> <b>CHURCH OFFICE CLOSED</b>	<b>26</b> <b>CHURCH OFFICE CLOSED</b>	<b>27</b> Rainbow out until 1/8	<b>28</b> <ul style="list-style-type: none"> <li>• 8:00 AA &amp; Al-Anon</li> </ul>	<b>29</b> 	<b>30</b> 
<b>1<sup>st</sup> Sunday of Christmas 31</b> <b>Carol Ann is leading worship.</b> <ul style="list-style-type: none"> <li>• 10:00 Worship in Sanctuary &amp; livestreaming on YouTube &amp; Facebook.</li> </ul>						



**SHELBY PRESBYTERIAN CHURCH  
226 E. GRAHAM ST.  
SHELBY, NC 28150**

**RETURN SERVICE REQUESTED**

**NON-PROFIT ORGANIZATION  
U. S. POSTAGE  
PAID  
SHELBY, NC  
PERMIT #3**